

Fully tighten all M6 Cap screws to maintain a permanent door position.
NOTE: If the door adjustment is not holding then tighten M6 Cap screws further and repeat steps 5a and 5b.



Step 7 - Install Hamper and Adjust the Handle Support Bracket

7a Install the laundry hamper in to the cutout provided and adjust the handle support bracket, if required, to ensure the support bracket provides support under the handle lip of the laundry hamper.



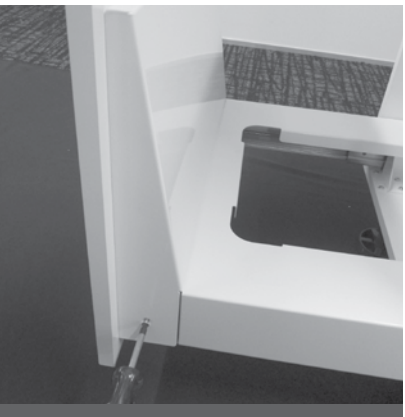
5C. To make a horizontal adjustment:
The door panel may be moved sideways or horizontally by loosening the mounting screws in the door mounting bracket sufficiently to allow the required movement. Retighten mounting screws when the desired position is achieved.



7b The handle support bracket position may be altered up or down by loosening the mounting screws and altering the bracket position.
Retighten screws when the desired position is achieved.



Step 6 - Install the door cover
Install the cover for the door mounting bracket by placing the cover over the door mounting bracket and secure with the M4 Machine screws provided.



YOUR INSTALLATION IS COMPLETE!



SCLBM160D 60L BASE MOUNT LAUNDRY HAMPER INSTALLATION INSTRUCTIONS



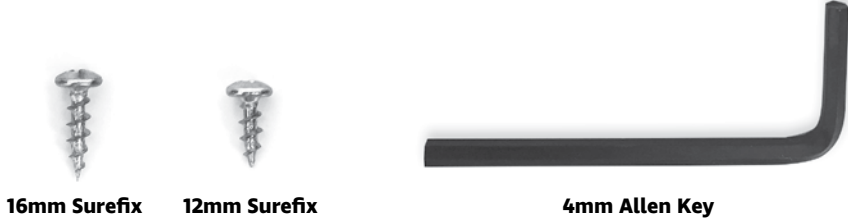


READ ALL INSTRUCTIONS BEFORE INSTALLING THIS BIN UNIT. FAILURE TO INSTALL THE BIN CORRECTLY MAY VOID WARRANTY.

BENCH OVERHANG CLEARANCE:

This Hideaway Soft Close laundry hamper model has been designed with over extension drawer runners which allow for a bench overhang of up to 60mm, allowing the bucket to come clear of the bench.

FASTENER IDENTIFICATION:



HIDEAWAY NEW ZEALAND 09 426 7456
info@hideawaybins.co.nz / hideawaybins.co.nz
HIDEAWAY AUSTRALIA 1800 042 642
info@hideawaybins.co.nz / hideawaybins.com.au



Important Installation Information:

AT ALL STAGES OF THE INSTALLATION ENSURE THE SPRING CARRIER ON THE RUNNER IS ENGAGED!

Before you open your soft close runners, ensure the spring carriers are loaded. Failure to do so may cause damage to your runners.

Figure 1a - Demonstrates the spring carrier in the engaged position. This is the correct positioning.

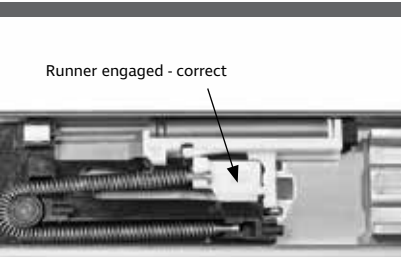


FIG 1a - Runner Engaged

Figure 1b - Demonstrates the spring carrier in an disengaged position. To move into engaged position, move the white spring carrier along its runner until it clicks into location demonstrated by arrow in Fig 1b. Alternatively, if discovered after installation is complete then you may also try the following: push the drawer to the firmly closed position. Push the disengaged side of the door firmly until you hear a click from the runner re-engaging. The runner should now close fully under normal operation and be positioned as shown in Fig 1a.

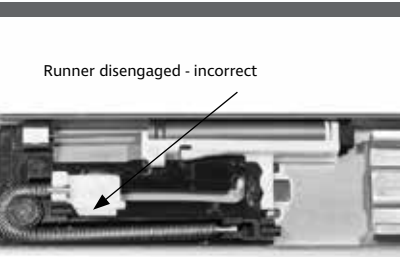
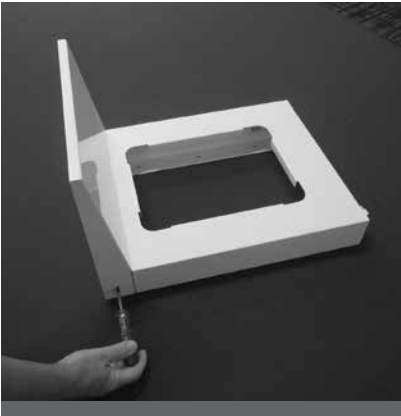


FIG 1b - Runner Disengaged

Step 1 - Unpack Hideaway Bin

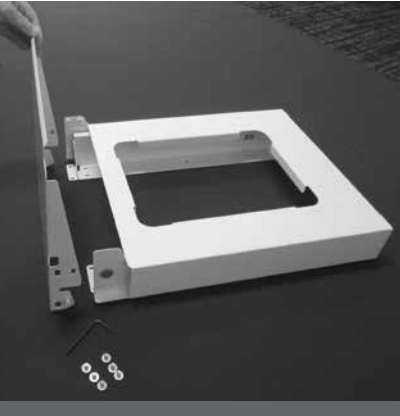
1a Remove the laundry hamper base from packaging.
Remove the door bracket cover by removing the M4 machine screw on right and left side.



Drilling Template 1 pictured below.
NOTE: Remove template from cabinet when pre-drilling is complete.



1b Remove the door mounting bracket from the base by removing the M6 cap screws using the hex key provided.
Leave the runners and runner support connected with the base plate.
The base unit is now ready to be installed. Use the **Base Unit** Drilling Installation Template 1 provided.

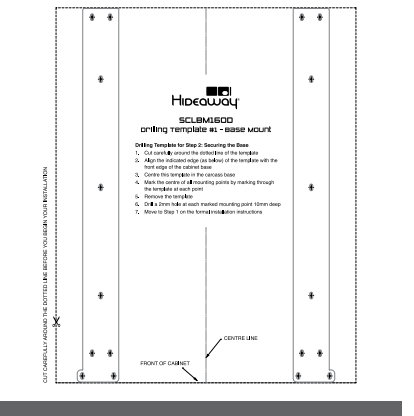


2b Install the base unit over the pre-drilled mounting holes. Secure with 1x 16mm screw at the front of each base side.



Step 2 - Secure the base

2a Use the Drilling Template 1 provided (pictured below) to mark mounting positions for **Base Unit**. Pre-drilling instructions are shown on the drilling template. Please follow instructions given then move on to Step 2b.



2c Secure with 1x 16mm screw at the back of each base side.



2d Fully extend the Base Unit to ensure the Base Unit opens and closes without coming in to contact with cabinet sides. Then fully extend again and secure the remaining mounting points of both base sides with 16mm screws provided.

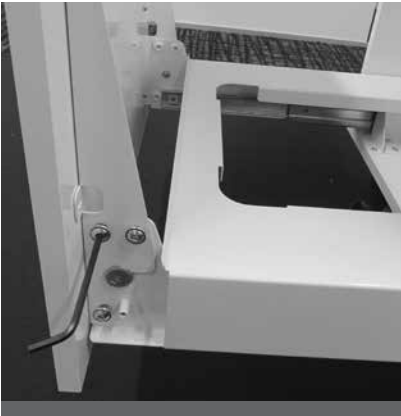


3b Position the Door Support Bracket over mounting holes and secure with 12mm screws provided.

NOTE: Alternative mounting holes are provided on the outside edge of the door mounting bracket, for door panels with centre inserts (profile doors). The alternate mounting points do not need to be used if the inner mounting holes are used and vice versa.

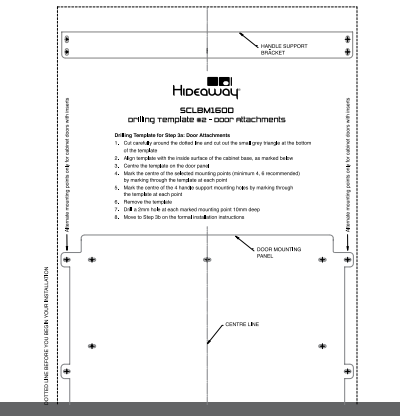


4b Insert the M6 Cap screws. These should be tightened with **hex key** to a point that holds the door in place **but** will allow some movement for adjustment purposes.



Step 3 - Door attachments

3a Use the **Door Support Bracket and Handle Support Drilling Template 2** (pictured below) to mark mounting positions on the door fascia. Pre-drilling instructions are shown on the drilling template.



3c Position the Handle Support Bracket over the pre-drilled mounting holes and secure with the 12mm screws provided.

Image below: Door panel with door mounting bracket and handle support bracket attached.



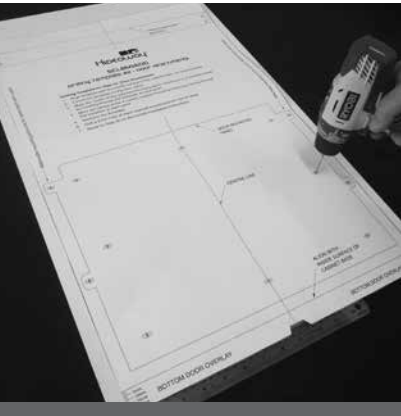
Step 5 - Door adjustment

5A. To adjust the door height (up or down):
Rotate the CAM Adjustor up or down using the hex key.



Use the Drilling Template 2 provided (pictured below) to mark mounting positions for **Door Support Bracket and Handle Support Bracket**. Pre-drilling instructions are shown on the Drilling Template 2. Please follow instructions and move on to Step 3b

NOTE: Remove template when completed.



Step 4 - Reattach door bracket (now with door fascia attached)

4a Set the CAM adjustment in the horizontal position, as indicated by the arrow on the CAM.
Align and reattach the door mounting bracket (now fixed to the door fascia) to the base unit as pictured.



5B. To adjust the door pitch:
Push the door panel firmly at top or bottom to make the door panel sit in the correct position when closed.
Reopen the draw by pulling from the bottom of door panel to ensure the correct positioning is maintained.

